

## Steel Pipes & Tubing

Picture:

Description:

Code:

### Angle Iron



ANGLE EQUAL 25x25x2mm	STANGLE25252
ANGLE EQUAL 25x25x3mm	STANGLE25253
ANGLE EQUAL 25x25x5mm	STANGLE25255
ANGLE EQUAL 30x30x2mm	STANGLE30302
ANGLE EQUAL 30x30x3mm	STANGLE30303
ANGLE EQUAL 30x30x5mm	STANGLE30305
ANGLE EQUAL 40x40x2.5mm	STANGLE404025
ANGLE EQUAL 40x40x2mm	STANGLE40402
ANGLE EQUAL 40x40x3mm	STANGLE40403
ANGLE EQUAL 40x40x5mm	STANGLE40405
ANGLE EQUAL 50x50x3mm	STANGLE50503
ANGLE EQUAL 50x50x5mm	STANGLE50505
ANGLE EQUAL 60x60x5mm	STANGLE60605
ANGLE EQUAL 60x60x6mm	STANGLE60606
ANGLE EQUAL 60x60x8mm	STANGLE60608
ANGLE EQUAL 70x70x6mm	STANGLE70706
ANGLE EQUAL 80x80x6mm	STANGLE80806

### Bar Flat



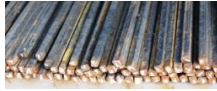
FLAT BAR 20x3MM	STFLAT203
FLAT BAR 20x5MM	STFLAT205
FLAT BAR 25x5MM	STFLAT255
FLAT BAR 30x3MM	STFLAT303
FLAT BAR 30x5MM	STFLAT305
FLAT BAR 40x5MM	STFLAT405
FLAT BAR 50x5MM	STFLAT505
FLAT BAR 60x8MM	STFLAT608
FLAT BAR 70x8MM	STFLAT708
FLAT BAR 80x8MM	STFLAT808

### Bar Round



ROUND BAR 6MM	RB06
ROUND BAR 8MM	RB08
ROUND BAR 10MM	RB10
ROUND BAR 12MM	RB12
ROUND BAR 16MM	RB16
ROUND BAR 20MM	RB20

## Bar Square



SQUARE BAR 10MM

SB10

## Bar Y



Y BAR 10MM

STY10

Y BAR 12MM

STY12

Y BAR 16MM

STY16

Y BAR 20MM

STY20

Y BAR 25MM

STY25

## Channel



STEEL CHANNEL 57x51MM

STCHAN5751

STEEL CHANNEL 76x38MM

STCHAN7638

STEEL CHANNEL 100x50MM

STCHAN10050

STEEL CHANNEL 120x55MM

STCHAN12055

STEEL CHANNEL 127x64MM

STCHAN12764

## Expanded Metal



EXPANDED METAL 10/30/3.0/1.6 6315F

STEXP358

EXPANDED METAL 15/40/3.0/1.6 6318F

STEXP352

EXPANDED METAL 25/50/3.0/2.0 6320D

STEXP349

EXPANDED METAL 25/50/4.5/3.0 6320H

STEXP346

EXPANDED METAL 50/80/4.5/2.5 6311F

STEXP338

## IPE SECTION



STEEL IPE AA 100x55x6.75kg/m

STAA100055

STEEL IPE AA 120x64x8.36kg/m

STAA120064

STEEL IPE AA 140x73x10.05kg/m

STAA140073

STEEL IPE AA 160x82x12.32kg/m

STAA160082

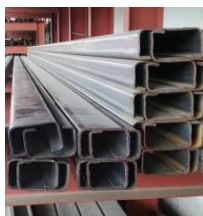
STEEL IPE AA 180x91x14.94kg/m

STAA180091

STEEL IPE AA 200x100x17.954kg/m

STAA200100

## Lip Channel



LIP CHANNEL 75x50x20x2mm x 6.0m

STLIP75502026M

LIP CHANNEL 75x50x20x2mm x 9.145mtr.

STLIP7550202

LIP CHANNEL 100x50x20x2MM x 6.0m

STLIP100502026M

LIP CHANNEL 100x50x20x2mm x 9.145mtr.

STLIP10050202

LIP CHANNEL 125x50x20x2MM x 6.0M

STLIP125502026M

LIP CHANNEL 150x50x20x2.5mm x 9.145mtr

STLIP150502025

## Plate Chequered



PLATE CHEQUERED ALU 2500x1200x1.5/2.0MM

ALUPC25121520

PLATE CHEQUERED ALU 2500x1200x2.0/3.0MM

ALUPC25122030

PLATE CHEQUERED ALU 2500x1200x3.0/5.0MM

ALUPC25123050

PLATE CHEQUERED STEEL 2500x1200x4.5/6.1MM

STPC25124561

PLATE CHEQUERED STEEL 2500x1200x3.0/4.6MM

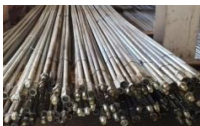
STPC2512346

## Pipe Galvanised



PIPE STEEL GALV. EXACTS 40MMX3MTR.	PISTG4030
PIPE STEEL GALV. EXACTS 50MMX3MTR.	PISTG5030
PIPE STEEL GALV. EXACTS 50MMX3MTR H/DUTY	PISTG5030HD
PIPE STEEL GALV. MEDIUM 15MMX6M	PISTG156
PIPE STEEL GALV. MEDIUM 20MMX6M	PISTG206
PIPE STEEL GALV. MEDIUM 25MMX6M	PISTG256
STAND PIPE GALV. 15X1000MM	PISTAND151000
STAND PIPE GALV. 20x1000MM	PISTAND201000

## Pump Rods



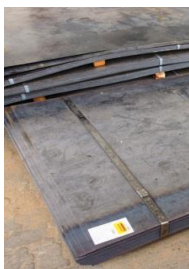
PUMP RODS GALV. 12MMX3M	PR123
PUMP RODS GALV. 16MMX3M	PR163
PUMP ROD SOCKETS 16MM	PRS16

## Rectagrid



RECTAGRID 40x40x25x4.5MM 2.4x1.2M (0121)	STRS40402545
RECTAGRID 40x40x30x4.5MM 2.4x1.2M (0126)	STRS40403045
RECTAGRID 40x40x40x4.5MM 2.4x1.2M (0130)	STRS40404045
RECTAGRID 45x50x25x4.5MM 2.4x1.2M (0621)	STRS45502545
RECTAGRID 45x50x30x4.5MM 2.4x1.2M (0626)	STRS45503045

## Sheets + Plate



STEEL SHEET HOT ROLLED 2450x1225x1.6mm	STSHEET16
STEEL SHEET HOT ROLLED 3650x1225x1.6mm	STSHEET161
STEEL SHEET HOT ROLLED 2450x1225x2.0mm	STSHEET20
STEEL SHEET HOT ROLLED 2450x1225x3.0mm	STSHEET30
STEEL PLATE MS 2500x1200x5MM	STPLATE5
STEEL PLATE MS 2500x1200x8mm	STPLATE8
STEEL PLATE MS 2500x1200x10mm	STPLATE10
STEEL PLATE MS 2500x1200x12mm	STPLATE12
STEEL PLATE MS 2500x1200x16mm	STPLATE16
STEEL PLATE MS 2500x1200x30mm	STPLATE30

## Tubing Rectangular



TUBING RECTANGULAR 50X25X2.0MM	TREC50252
TUBING RECTANGULAR 50X38X2.0MM	TREC50382
TUBING RECTANGULAR 76.2X38X2.0MM	TREC76382
TUBING RECTANGULAR 100X50X2.0MM	TREC100502

## Tubing Round



TUBING ROUND BLACK 15.9x1.6MM	TUBR1616
TUBING ROUND BLACK 19.1x1.6MM	TUBR1916
TUBING ROUND BLACK 19.1x2.0MM	TUBR1920
TUBING ROUND BLACK 25.4x1.6MM	TUBR2516
TUBING ROUND BLACK 25.4x2.0MM	TUBR2520
TUBING ROUND BLACK 31.8x1.6MM	TUBR3216
TUBING ROUND BLACK 31.8x2.0MM	TUBR3220
TUBING ROUND BLACK 31.8x3.0MM	TUBR3230
TUBING ROUND BLACK 34.1x1.6MM	TUBR3416
TUBING ROUND BLACK 38.1x1.6MM	TUBR3816
TUBING ROUND BLACK 38.1x2.0MM	TUBR3820
TUBING ROUND BLACK 42.8x2.0MM	TUBR4220
TUBING ROUND BLACK 48.0x1.6MM	TUBR4816
TUBING ROUND BLACK 48.4x2.0MM	TUBR4820
TUBING ROUND BLACK 50.8x3.0MM	TUBR5030
TUBING ROUND BLACK 60.3x2.0MM	TUBR6020
TUBING ROUND BLACK 76.2x1.6MM	TUBR7616
TUBING ROUND BLACK 76.2x2.0MM	TUBR7620
TUBING ROUND BLACK 88.9x3.0MM	TUBR8930
TUBING ROUND BLACK 101.6x2.0MM	TUBR10120
TUBING ROUND BLACK 101.6x3.0MM	TUBR10130

## Tubing Square



TUBING SQUARE 12.7x1.6MM	TSQ12716
TUBING SQUARE 19x1.6MM	TSQ19016
TUBING SQUARE 19x2.0MM	TSQ19020
TUBING SQUARE 25x1.6MM	TSQ25416
TUBING SQUARE 25x2.0MM	TSQ25420
TUBING SQUARE 32x1.6MM	TSQ32016
TUBING SQUARE 32x2.0MM	TSQ32020
TUBING SQUARE 38x1.6MM	TSQ38016
TUBING SQUARE 38.1x2.0MM	TSQ38120
TUBING SQUARE 50.8x1.6MM	TSQ50816
TUBING SQUARE 50.8x2.0MM	TSQ50820
TUBING SQUARE 76.0x2.0MM	TSQ76020
TUBING SQUARE 101.6x3.0MM	TSQ10030

---